

Membership Information

About Us

Schmooze isn't your typical networking group. Rather use the ways and means of networking to foster great connections, inspire our members and guests, and create opportunities for them. Our atmosphere is welcoming, personalised, sophisticated and purposely informal to make it easy for people to connect.

Through wide program of workshops, informal networking functions and seminars, online forums, and services, it brings together people in a welcoming atmosphere that cuts across industry sectors in a collaborative manner.

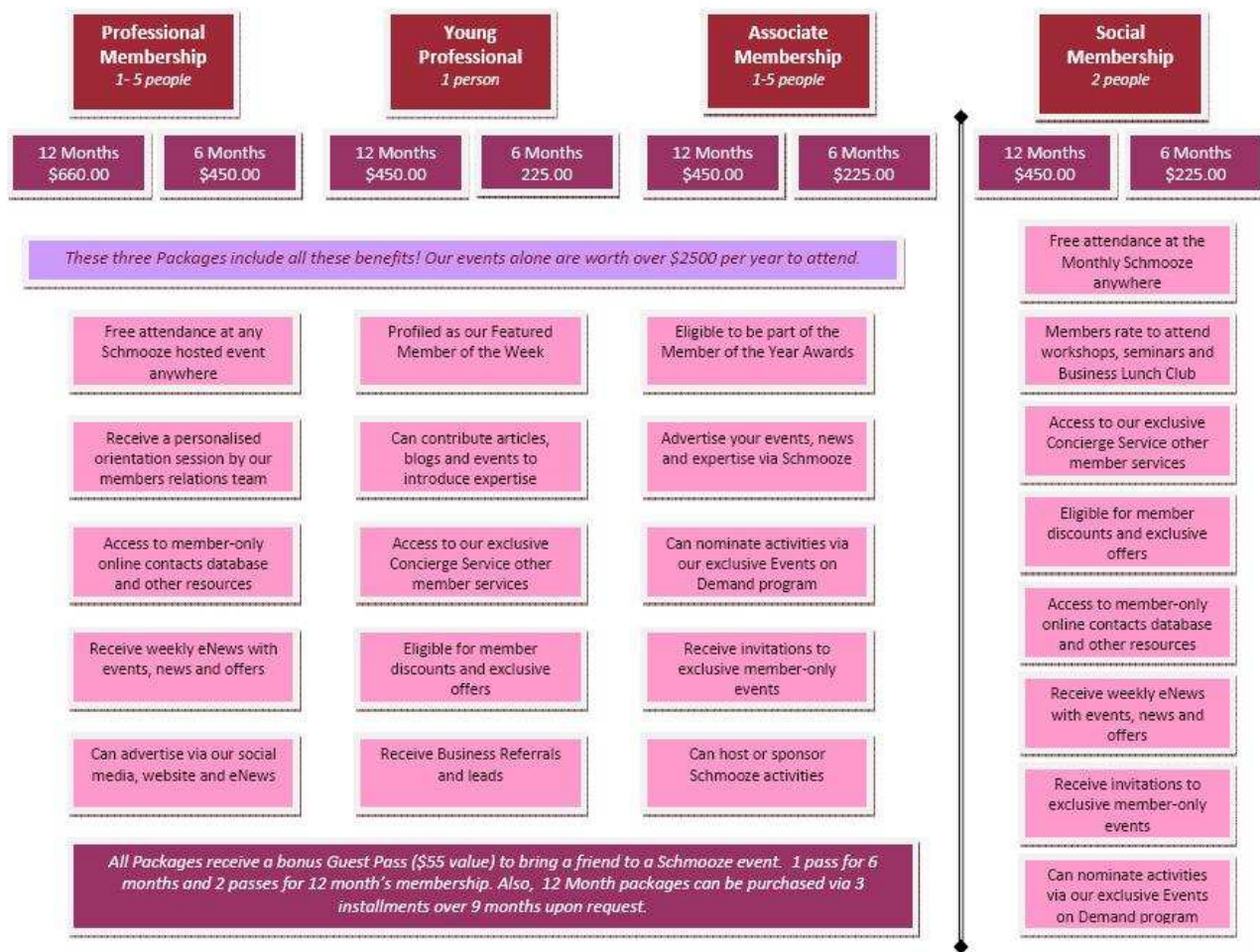
We also support our community through supporting the arts, charities and social ventures and provide a neutral environment that enables synergies to be fostered between individuals and groups, and through joint initiatives.

Schmooze also provides a platform for its members to promote their own events and expertise, as well as provide a range of services to facilitate introductions and targeted business development opportunities, but all done in a personalised manner. Members can also leverage our range of online resources including social media and a members contact database, and in short, we aim to provide as much assistance as we can to help our members in their professional, business or personal agendas.

Membership Packages

We offer four membership packages for either six or 12 months- please see the table for costs and inclusions.

- **Professional:** Choose this option if you want to use your membership to promote your services, events, products and expertise using our website, social media, and eNews as well as attend our full program of Schmooze-hosted events in any location for free.
 - You are also eligible to receive business referrals and leads, plus guest speaking opportunities.
 - This Package is very flexible as it allows you to share the membership up to *five colleagues* who are all considered members.
 - The support of our members relations manager team to advise on how to make the most of your membership.
- **Social:** Choose this package if you just want to socialise, make some friends and enjoy the range of membership benefits. However, social members cannot advertise or promote their business through us.
 - Attend the Monthly Schmooze's for free with our nominated partner in any location
 - This membership can be shared with a nominated partner or family member.
 - You can also attend other Schmooze events, like our seminars and workshops at discounted rates.
- **Young Professional:** This package is for 30's who want full access to our program and receive all the inclusions as per the **Professional Package**,
 - This membership only applies to one person.
- **Associate:** This Package has the same inclusions and benefits as the **Professional Package**, and is open to:
 - Registered Charities and Not-for-Profit organisations
 - Those based in rural Australia and who want to advertise your business and events through Schmooze, but are not likely to attend our events.
 - The interstate offices of current Associate/Young Professional / Professional members
 - The committees of Young Professional / Student organisations (it is shared between the members)
 - Interstate offices of a current members - up to five full-time staff from the same organisation



More Information

- Our Policies: <http://www.schmooze.net.au/site/policy.php>
- Frequently Asked Questions: http://www.schmooze.net.au/site/prof_faq.php
- A list of new and renewing members including a breakdown by sector: <http://www.schmooze.net.au/site/Members2011.php>
- Informal Q/A profiles of some of our members: <http://www.schmooze.net.au/site/meetamember.php>
- Videos of past events, website tours and what our members say: <http://www.youtube.com/Schmooze1000>
- Our 2012 Program of events: <http://www.schmooze.net.au/site/2012Program.php>

Referral Reward Program

If you introduce 3 new members (not renewing) to us you'll receive a 6 month's Professional package with our compliments. Existing members will receive a bonus six months membership to their current one when it expires. All your colleagues need to do is put your name in the Referral field on the application form.

Current Membership Profile

Whilst there is no such thing as a typical Schmooze member, we can say that:

- 70% of our members are aged 35-55 who are either own their company or in start-up phase, or are senior managers for a national organisation / 20% are young professional / 5% social members / 5% Associate members
- The majority of our members are professionals aged over 30 to 50, and we have the full spectrum of sectors represented with a 80% private / 20% public split.

Questions?

We meet each new member personally to get to know them and advise them on how best to make the most of their membership. So please contact us if you'd like a consultation or have a question.

Just email us at: info@schmooze.net.au.

We also have a range of Frequently asked questions here: http://www.schmooze.net.au/site/prof_faq.php

How to Join

To join Schmooze is a simple process:

- Fill in the online application form: <http://www.schmooze.net.au/site/appform.php>
- Pay for your membership
- Once your paid you'll have access to the resources in the *Members Lounge* and your membership will commence
- We'll contact you, and offer any advice you may need to make the most of your membership including a meeting with one of Members Relations Managers to give an orientation on all the facets of Schmooze

Contact Points

- Website: www.schmooze.net.au /
- Email: info@schmooze.net.au
- Twitter: @schmoozeabr
- LinkedIn: <http://tinyurl.com/3t9mggm>
- Facebook Canberra: <http://tinyurl.com/3tjm6l7/>
- Facebook Melbourne: <http://tinyurl.com/3s29ygg/>



Learn and Be Inspired		Promote Your Events, Services and Expertise		Get Connected & Meet the Right People		Great Services, Offers and Resources	
Business Lunch Club	Young Prof Seminars	Member Profiles	Featured Member	Member LinkedIn	Facebook Groups	Relations Managers	Business Referrals
Business Workshops	Student Internships	Featured Cause of Month	Events Calendar	Schmooze Twitter	Monthly Schmooze	Concierge Service	Charity Sponsorships
Schmooze@ Campus	Networking Articles	Business Referrals	Schmooze Express eNews	Member Profiles	Student Internships	Event Management	Member Profiles
Events on Demand	Membership Tips	Schmooze YouTube	Market Place Expo	Concierge Service	Schmooze Events	Members Orientation	Events Calendar
Member Articles /Blogs	Professional Relations Series	Member of Year Awards	Website	Joint Events	External Events	How-To Videos	In-House Events
	Master Classes	Member Articles/ Blogs	Members Offers	Member-hosted Events	In-House Events	Member Offers	